



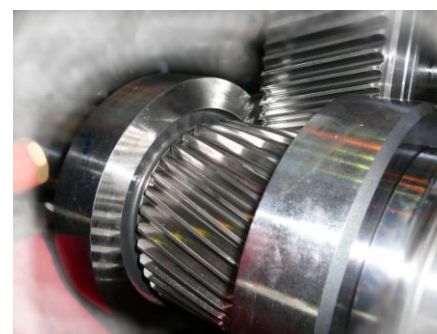
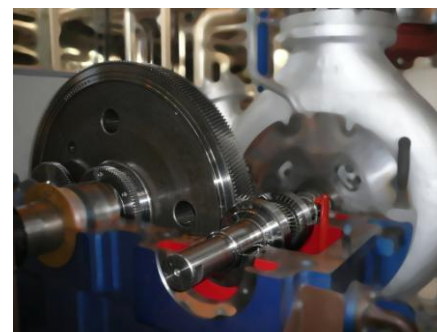
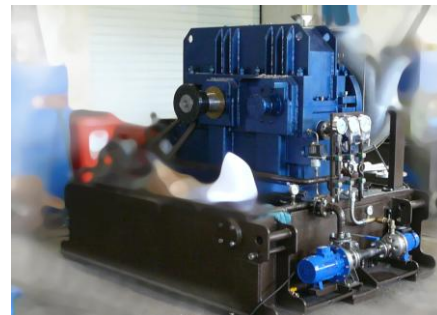
G-Team a.s.
Šeříková 580
334 41 Dobřany

IČO 45358028
DIČ CZ45358028

Výpis z obch. rejstříku potvrzen KS v Plzni odd. B vložka 1319

GEAR-BOX MANUFACTURED BY G-TEAM COMPANY A.S.

Gear-box G-Team a.s.		
Gear-box type	Description	Parameters
Type 100/n	power weight input speed output speed gear ratio axial distance	max. 150 kW 360 kg 29625 /min 3000 /min 9,87 200 mm
Type 320/n	power weight input speed output speed gear ratio axial distance	max. 770 kW 640 kg 13054 - 19000 /min 3000 /min 4,351 - 6,333 250 mm
Type 560/n	power weight input speed output speed gear ratio axial distance	max. 2000 kW 3250 kg 9136 - 14889 /min 1500 /min 6,091 - 9,926 539 - 548 mm



Gear-box is front-horizontal with sliding bearings which are lubricated by pressure oil from the oil system TR, self-oil pump driven by slow-speed shaft. Slow-speed rotor of gear-box is connected with clutch to the rotor of driven machine.

It is important to check the bearings temperature during operation, measured by thermometers. The bearings temperatures mustn't exceed the limit value on which the protections are set. Oil pressure into gearbox must be kept according to recommended range given by manufacturer.

adresa: **G-Team** a.s. – odštěpný závod **Turbomachinery**

• Sadová 579 • 595 01 Velká Bíteš • Česká Republika

telefon +420 566 531 641, 642 • fax, telefon +420 566 531 640 • E-mail steamturb@g-team.cz